



**TruEquine**<sup>™</sup>  
Postbiotic

Equine Product Line

 **Diamond V**<sup>®</sup>  
The Postbiotic People<sup>™</sup>

# The Unbridled Power of Postbiotics

The TruEquine™ postbiotic line offers several convenient options of Diamond V's fermentate technology for all ages and levels of horses, from equine elite athletes to senior horses. The dual-action functionality of TruEquine Postbiotic helps support both immune and gut functions for optimal health and performance.

Research shows TruEquine Postbiotic helps support and promote:



Joint Support



Gut Health



Stress Management

TruEquine Postbiotic works naturally\* with the biology of your horse to help support a healthy immune system, manage its physiological response to everyday stressors, and support joint health and mobility. It also supports a healthy hindgut microbiome for optimal digestion and gut function by helping maintain a healthy, absorptive gut wall and beneficial gut microbial population.

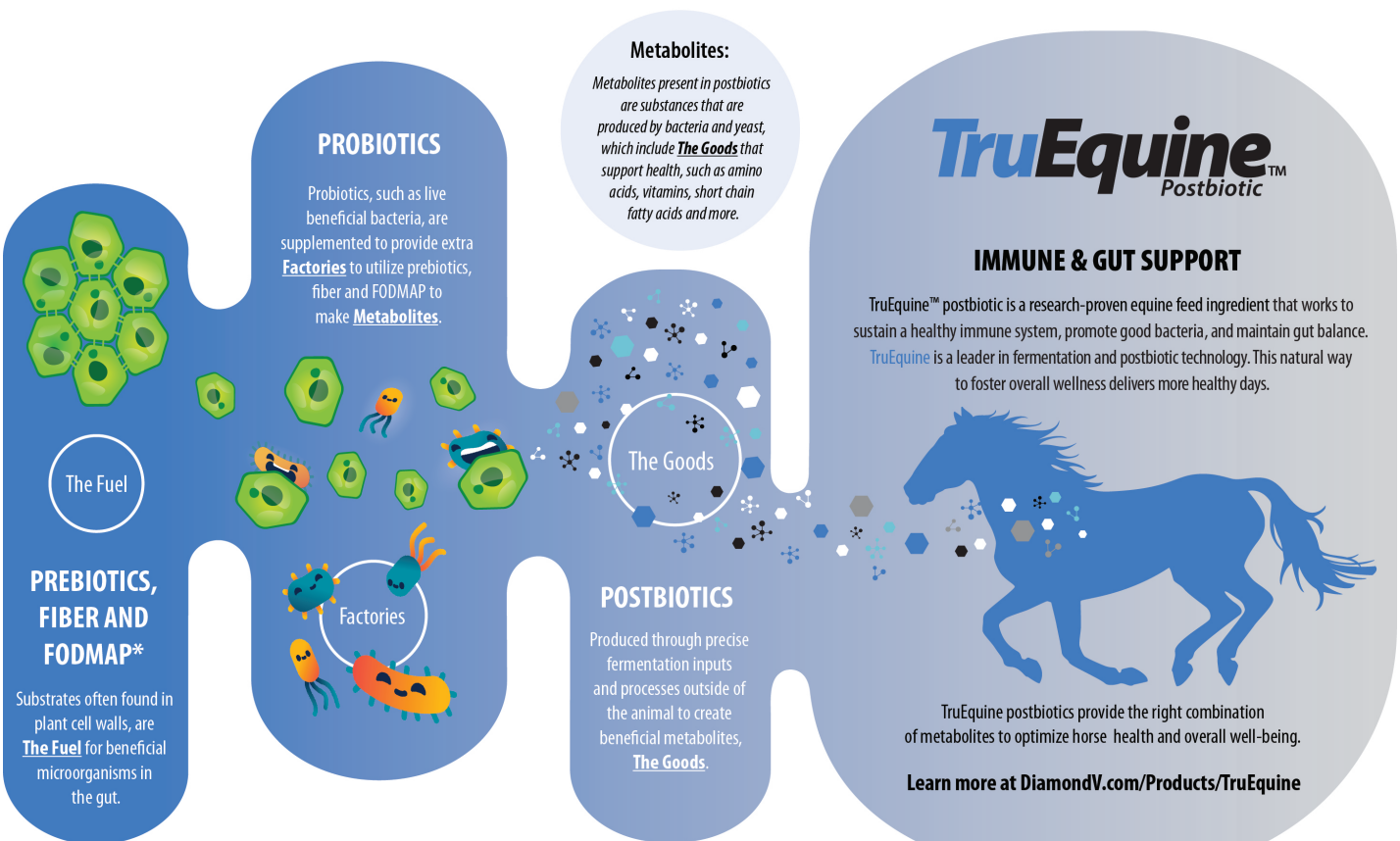
Diamond V continues to build on almost 80 years of leadership in the research, development, and manufacturing of microbial fermentation technologies. TruEquine Postbiotic is manufactured in the United States in our state-of-the-art facilities that meet current Good Manufacturing Practices and other stringent, globally recognized quality criteria.

## What's the Difference

### Prebiotics, Probiotics, and Postbiotics

Postbiotics are a preparation of inanimate microorganisms and/or their compounds that confers health benefits to the host (ISAPP Consensus, 2021). Postbiotics can have a positive effect on the beneficial bacteria within the horse's gut, which can support:

**Mobility, Digestion, and Immunity.**



\* FODMAP - (fermentable oligosaccharides, disaccharides, monosaccharides, and polyols)

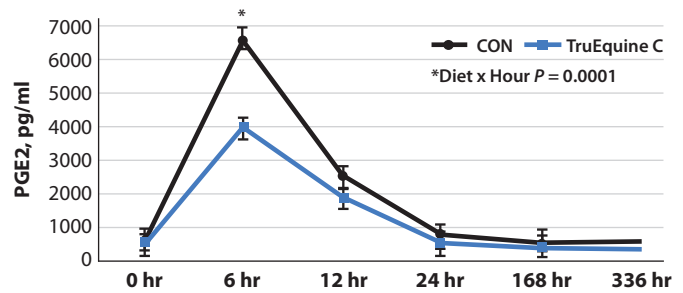
\* Natural as defined by AAFCO

### 3 Research Proven Postbiotic Benefits



#### Maintain Joint Health – Reduction in Inflammation Marker

Overall PGE<sub>2</sub><sup>1</sup> levels were lower in horses fed TruEquine™ C Postbiotic compared to Control horses.

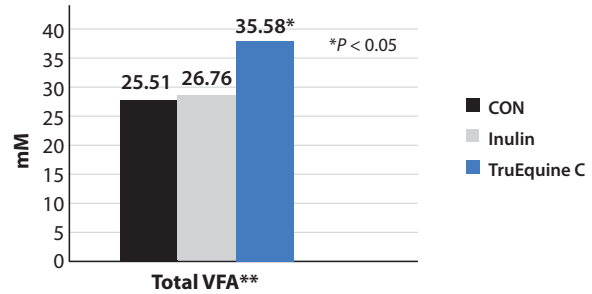


Martinez et al., 2019.



#### Promote Gut Function – Volatile Fatty Acid (VFA) Production

TruEquine C Postbiotic elicited more VFA production compared to both the negative (CON) and positive (Inulin) control.

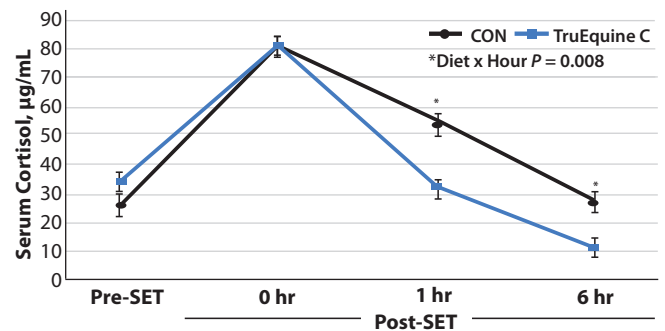


\*\* Total VFA is the sum of acetate, propionate, butyrate, isobutyrate, isovalerate and valerate.  
Diamond V, 2017. Equine *in vitro* IAMM Research, LA097.



#### Help Manage Stress - Reduced Cortisol

Horses fed TruEquine C Postbiotic exhibited lower serum concentrations of cortisol compared to Control horses.



Valigura et al., 2021.

### Product Overview

TruEquine Postbiotic products are ideal for use in all classes of equine diets to support optimal health and performance.



TruEquine™	TruEquine™ C	TruEquine™ CLS
Moderate inclusion rate	Moderately low inclusion option that is more concentrated than TruEquine.	More concentrated than TruEquine, and is a lower starch, non-GMO version of TruEquine C.
184 mg/kg body weight per day	46 mg/kg body weight per day	46 mg/kg body weight per day

<sup>1</sup> Prostaglandin E<sub>2</sub>, a bioactive lipid that stimulates inflammation.

# TruEquine™ | Frequently Asked Questions

**How is TruEquine made?** TruEquine Postbiotic is produced using Diamond V's *Saccharomyces cerevisiae* fermentation technology platform.

**How does TruEquine work?** Research shows TruEquine Postbiotic has dual-action functionality to support immune function and digestive health. This helps support your horse's immune system to maintain immune strength, support digestive tissue integrity, and promote a healthy microbial balance.

**Why is it unique?** The TruEquine Postbiotics are not a single compound, but rather a microbial fermentate composed of hundreds of bioactive compounds. These bioactives work synergistically with the biology of the horse to support health and performance.

**Are there any restrictions to feeding TruEquine?** No. TruEquine is safe to be fed to all horses in all life stages.

**How stable is TruEquine?** TruEquine has excellent stability under extended storage conditions and through all high heat and pressure processing conditions normally utilized in feed manufacturing. Shelf life is 24 months from date of manufacture.

**Is TruEquine a live yeast product?** No! TruEquine is a unique *Saccharomyces cerevisiae* fermentation product.

**Is TruEquine the same as mannanoligosaccharide (MOS) or beta-glucan products?** No! Most MOS and beta-glucan feed additives are by-products of other manufacturing processes. Our proprietary fermentation technology of *Saccharomyces cerevisiae* results in a unique product that contains beneficial metabolites in addition to the MOS and beta-glucan fractions.

**Is TruEquine appropriate for pleasure horse diets, or is it targeted towards performance horse diets only?** Regardless of a horse's stress level, or nutritional status, TruEquine can complement and enhance their daily diet and nutritional well-being.

*This document is provided to you, at your request, for informational purposes only. These materials do not, and are not intended to, constitute veterinary, legal or regulatory advice. The information contained in this document is based on publicly available sources and/or unpublished data and is believed to be true and accurate, but Diamond V does not guarantee or make any warranty of accuracy or completeness. Legal and regulatory compliance for your business is your responsibility. The purchaser/user assumes all risks relating to the use of the information contained herein, and agrees that we are not liable to you or any third party relating to the use of such information. We recommend you consult animal health, regulatory and legal advisors familiar with all applicable laws, rules and regulations.*

Approved 08/13/2021

**If you would like more information, please contact your local Diamond V representative.**

2525 60th Avenue SW  
Cedar Rapids, IA 52404 | USA  
TF: 800.373.7234 | Phone: +1.319.366.0745  
**DiamondV.com**



© 2021. Cargill, Incorporated. All rights reserved.

MANUFACTURED IN THE USA  
BR\_EQ001\_0821